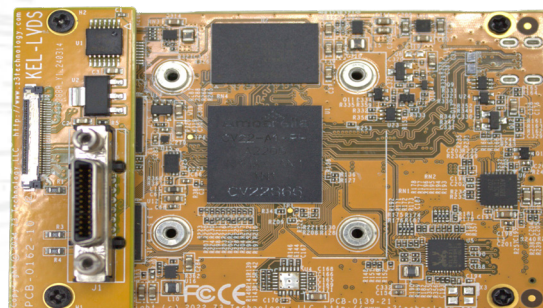


- H.265/H.264 Dual Camera Video Streaming
- Interfaces with Cameralink, LVDS and Composite Cameras
- High Quality, Low Latency Encoding Streaming and Recording
- Send Power, Controls and Video from the Encoder to your Cameralink or LVDS Camera



Technical

Camera1 Interfaces	Cameralink via SDR Connector
•Cameralink Formats	Cameralink Base Support <ul style="list-style-type: none"> • Pixel Clock Frequency up to 85 MHz • Monochrome, RGB and YUV Pixel Formats 8-16 Bits
Camera2 Interfaces	KEL LVDS Connection for Thermal or Visible Cameras Composite Cameras
•Additional Interfaces	100 Megabit Ethernet, RS-232, UART, Serial and Composite Output
Video Codecs	H.265, H.264 and MJPEG
Recording	Networks File System or Micro-SD
Encoding Resolutions	1080p (up to 60fps), 720p (up to 60fps), NTSC/PAL, VGA, CIF and QVGA
Output Formats	RTP, RTSP, MPEG-2 TS, RTMP, RTMPS, TSRTSP, and SRT <ul style="list-style-type: none"> • Low Latency, Low Power • Cyber Secure Features Available, SNMPv2, SNMPv3 and the ability to turn off unneeded services • User Level Authentication Settings Available • Simultaneous encode of H.265/HEVC and H.264 • Record to Micro-SD or Network File System • Control via HTTP/HTTPS web GUI, API, ONVIF or SSH/Serial • SRT Modes Supported: Caller, Listener, Rendezvous, SRT Encryption, AES-128, 192, 256 • Live Video Preview in the Web GUI • Multicast and Unicast Support • Text Overlay via Web GUI or custom placement of Text or PNG via HTTP/S API • RS-485 Pelco Support, 3 configurable serial ports • Dual output displays or PIP Mode Support • STANAG 4609 Compliant • Embedded KLV Metadata Support via SDI or Serial, MISB 0601 Compliant • High Precision Timestamps Across Multiple Streams, MISB 0604 Compliant • AI Ready for the one the edge analytics

Features

Specifications

Encoder Board Size	75 x 50 mm (2.95 x 1.97 in)
Encoder Board Weight	68g
Power Consumption	4.5W typical while encoding 2 cameras in H.265
Power Supply	12V DC or PoE 802.3af/at class 0



ORDERING OPTIONS

CamL2-15 OEM Production Set

- CamL2-15 Encoder Boards

Note: Camera and cables sold separately

CamL2-15-RPS OEM Starter Kit

- CamL2-15 Encoder Boards
- Power Supply
- Software SDK
- Documentation
- Serial Cable
- KEL Cable

Note: Camera sold separately

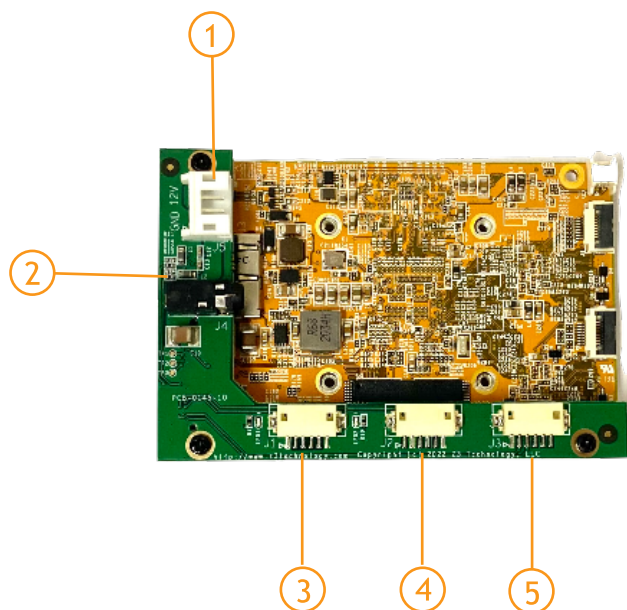
APPLICATIONS

Military Applications
Security and Surveillance
Industrial
Unmanned Systems
Customized Applications*



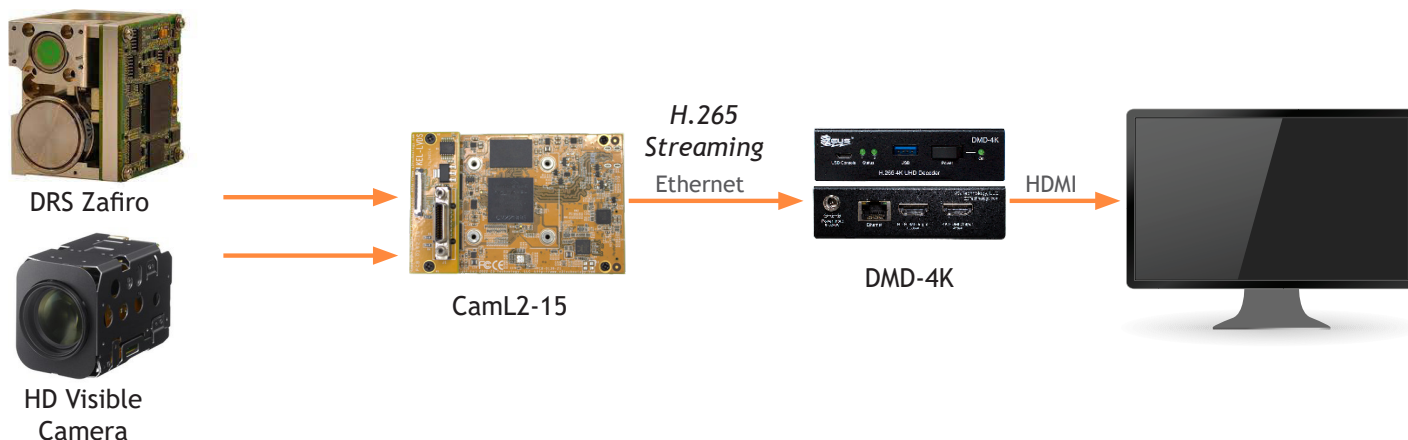
Made in the USA





- ① Power Input
- ② Serial Interface
- ③ 100Mb Ethernet
- ④ Composite Output
- ⑤ GPIO

USE CASE



***Contact Z³ Technology for Customized Product Options**
sales@Z3technology.com +1.402.323.0702 www.Z3technology.com



Z³ Technology is an industry-leading, USA-based manufacturer of production-ready embedded multimedia solutions and IP camera systems. From our founders to our world-class engineers to our sales and customer service team, we understand your requirements and speak your language. Our experience allows us to provide cost-effective solutions to meet your multimedia product requirements. With the assistance of our robust worldwide distribution and sales networks, we can provide a simple solution for your multimedia needs.