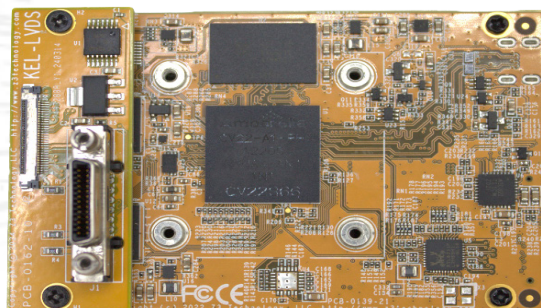


- H.265/H.264 Dual Camera Video Streaming
- Interfaces with Cameralink, LVDS and Composite Cameras
- High Quality, Low Latency Encoding Streaming and Recording
- Send Power, Controls and Video from the Encoder to your Cameralink or LVDS Camera



## Technical

|                        |   |
|------------------------|---|
| Camera1 Interfaces     | Cameralink via SDR Connector  |
| •Cameralink Formats    | Cameralink Base Support <ul style="list-style-type: none"> <li>• Pixel Clock Frequency up to 85 MHz</li> <li>• Monochrome, RGB and YUV Pixel Formats 8-16 Bits</li> </ul>   |
| Camera2 Interfaces     | KEL LVDS Connection for Thermal or Visible Cameras<br>Composite Cameras   |
| •Additional Interfaces | 100 Megabit Ethernet, RS-232, UART, Serial and Composite Output   |
| Video Codecs           | H.265, H.264 and MJPEG  |
| Recording              | Networks File System or Micro-SD  |
| Encoding Resolutions   | 1080p (up to 60fps), 720p (up to 60fps), NTSC/PAL, VGA, CIF and QVGA  |
| Output Formats         | RTP, RTSP, MPEG-2 TS, RTMP, RTMPS, TSRTSP, and SRT <ul style="list-style-type: none"> <li>• Low Latency, Low Power</li> <li>• Cyber Secure Features Available, SNMPv2, SNMPv3 and the ability to turn off unneeded services</li> <li>• User Level Authentication Settings Available</li> <li>• Simultaneous encode of H.265/HEVC and H.264</li> <li>• Record to Micro-SD or Network File System</li> <li>• Control via HTTP/HTTPS web GUI, API, ONVIF or SSH/Serial</li> <li>• SRT Modes Supported: Caller, Listener, Rendezvous, SRT Encryption, AES-128, 192, 256</li> <li>• Live Video Preview in the Web GUI</li> <li>• Multicast and Unicast Support</li> <li>• Text Overlay via Web GUI or custom placement of Text or PNG via HTTP/S API</li> <li>• RS-485 Pelco Support, 3 configurable serial ports</li> <li>• Dual output displays or PIP Mode Support</li> <li>• STANAG 4609 Compliant</li> <li>• Embedded KLV Metadata Support via SDI or Serial, MISB 0601 Compliant</li> <li>• High Precision Timestamps Across Multiple Streams, MISB 0604 Compliant</li> <li>• AI Ready for the one the edge analytics</li> </ul> |

## Features

## Specifications

|                      |  |
|----------------------|--|
| Encoder Board Size   | 75 x 50 mm (2.95 x 1.97 in)                    |
| Encoder Board Weight | 47g  |
| Power Consumption    | 4.5W typical while encoding 2 cameras in H.265 |
| Power Supply         | 12V DC or PoE 802.3af/at class 0               |



## ORDERING OPTIONS

### CamL2-15 OEM Production Set

- CamL2-15 Encoder Boards

*Note: Camera and cables sold separately*

### CamL2-15-RPS OEM Starter Kit

- CamL2-15 Encoder Boards
- Power Supply
- Software SDK
- Documentation
- Serial Cable
- KEL Cable

*Note: Camera sold separately*

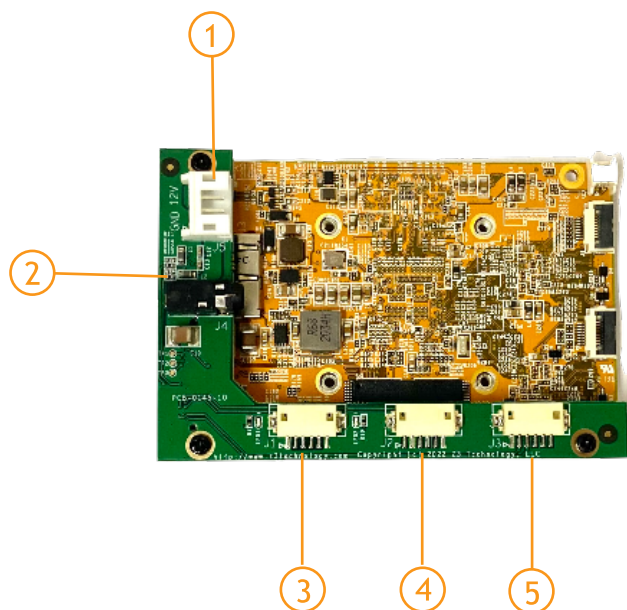
## APPLICATIONS

Military Applications  
Security and Surveillance  
Industrial  
Unmanned Systems  
Customized Applications\*



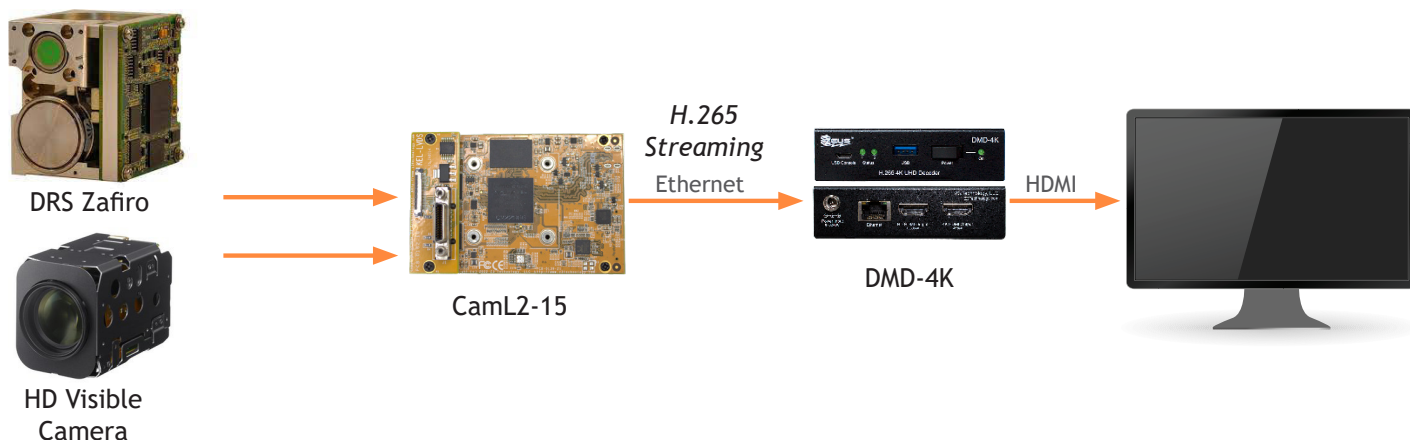
Made in the USA





- ① Power Input
- ② Serial Interface
- ③ 100Mb Ethernet
- ④ Composite Output
- ⑤ GPIO

## USE CASE



**\*Contact Z<sup>3</sup> Technology for Customized Product Options**  
[sales@Z3technology.com](mailto:sales@Z3technology.com) +1.402.323.0702 [www.Z3technology.com](http://www.Z3technology.com)



Z<sup>3</sup> Technology is an industry-leading, USA-based manufacturer of production-ready embedded multimedia solutions and IP camera systems. From our founders to our world-class engineers to our sales and customer service team, we understand your requirements and speak your language. Our experience allows us to provide cost-effective solutions to meet your multimedia product requirements. With the assistance of our robust worldwide distribution and sales networks, we can provide a simple solution for your multimedia needs.