



EXOSENS MicroCube XP Digital LVDS Output Board

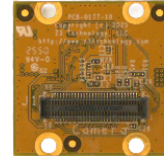
Designed for your IR Camera Connection Needs

CIB-EX22

- Attaches to EXOSENS Camera Body
- LVDS Digital Video Output
- KEL Cable Connection to Z3 Encoders

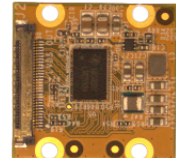
The CIB-EX22 is designed to attach to the back of the EXOSENS MicroCube XP camera model for an exact match of the camera body with mounting holes for securing the board. On the other side of the board is a LVDS digital video output available via a single 30-pin KEL cable connection, allowing for Z3 Video Encoders to receive video from the MicroCube XP and send both power and bidirectional controls to the camera. Accelerate your project development and create a complete IP Camera System by leveraging Z3 Technology's add-on Video Encoders for H.265/H.264 or MJPEG video streaming and recording. Z3 Video Encoders allow for control options through the API, web GUI or serial. Each platform features exceptionally low power, top notch compressed video quality, and Ultra Low Latency performance.

Front view



Matches to EXOSENS MicroCube XP

Back view



Connectors available to Z3 Encoders

Technical

Camera Supported	EXOSENS MicroCube XP
Video Output	LVDS Digital
Interfaces	<ul style="list-style-type: none"> • KEL cable connection for digital video, power and camera control when connecting to the FV2K, FV4K, FSDI, and Q603 Video Encoder

Specifications

Board Size	22 x 22 x 2 mm (0.87 x 0.87 x 0.08 in)
Board Weight	2g (0.07oz)
Temperature Range	-40°C to 80°C

Add-On OEM

Video Encoders

Single Camera Encoder	Q603
Dual Camera Encoder	FV2K, FV4K, FSDI

Encoder Features

- Low Power + Low Latency
- H.265/H.264/MJPEG codecs supported
- Easy-to-Use HTTPs Web GUI with live video pre-view
- Send VISCA and IR Camera Controls over IP with Web GUI or HTTPS API
- ONVIF® Profile S, T, and M Compliant
- NDAA, TAA, REACH, and ROHS Compliant
- Embedded KLV Metadata Support Via Serial, MISB 0601 Compliant
- High Precision Timestamps Across Multiple Streams, MISB 0604 Compliant
- Region of Interest: Configurable Field of View
- Absolute PTZ Support and PTZ Tours; Pelco D PTZ Position and ONVIF
- NMEA GPS Overlay
- AI Ready for on the edge analytics
- Simultaneous Stream + Record

ORDERING OPTIONS

CIB-EX22

- Camera Interface Board for EXOSENS MicroCube XP
- Documentation

Note: EXOSENS MicroCube XP and Z3 Video Encoders sold separately*

APPLICATIONS

- Inspection
- Defense Systems
- Security and Surveillance
- Unmanned Systems
- Customized Applications*



*Contact Z3 Technology for Customized Product Options

sales@Z3technology.com

+1.402.323.0702

www.Z3technology.com